

## Special Thanks and Acknowledgements

**Cracked** was developed with funds attained from the Canadian Institutes of Health Research (CIHR). Ethics approval was received through the Office of Research Ethics at the University of Waterloo. Ms. Moorhouse was financially supported by an Ontario Arts Council's Theatre Creator's Reserve, administered by Theatre Gargantua.

We wish to thank the Waugh Family Foundation for their generous support of the filming of *Cracked* and the development of a website to make the film and our research on *Cracked* widely available.



Waugh Family Foundation

A very special thanks to the people with dementia and their family members who shared their stories with us, and to Jerrold Karch for his creative contributions.

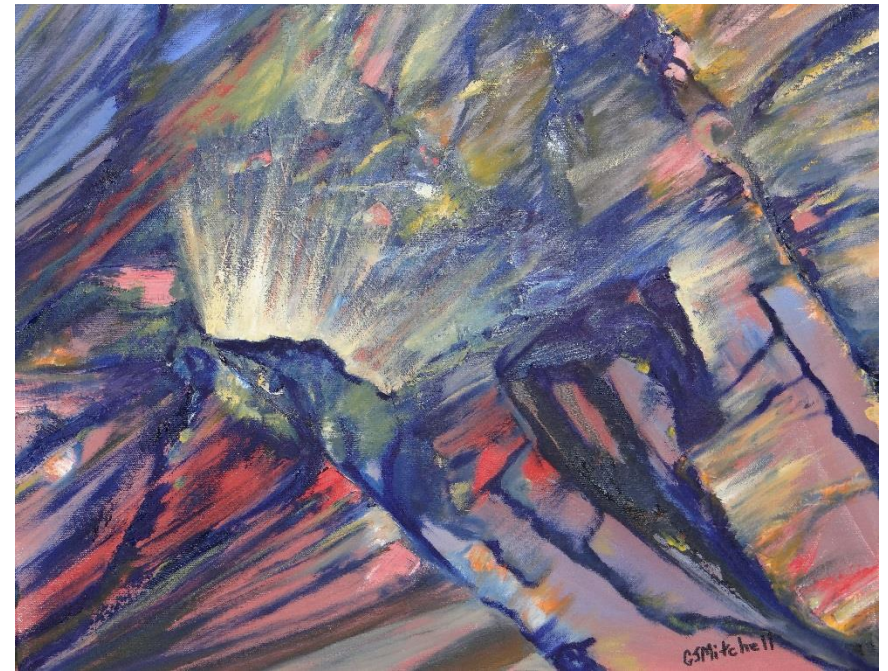
Thanks also to: Kamill and Attila Apt, Giselle Clarke-Trenaman, Romeo B. Colobong, Nadine Cross, Allan Day, Sandy DeVisser, Jeannette Gevikoglu, Dr. Tara Goldstein, Anna Gray, Chris Janik, Marika Kemenyi, Kathy Lakatos, Tom Lakatos, Andrew Lamb, Heather Landon, Lin Lay, Judith Leitner, Sian Lockwood, Elizabeth McDermott, Lisa Meschino, Dr. Gary Naglie, Daniel Nemes, Dana Paul, Michelle Ramsay, Meg Tennant, Lois Ward.

### Stay in touch!

For more information about **Cracked**, please feel free to email:

Sherry Dupuis    sldupuis@uwaterloo.ca  
Julia Gray        juliagray@possiblearts.ca

Follow us on Twitter @CrackedDementia  
Find us on Facebook CrackedonDementia  
Partnerships in Dementia Care Alliance: [www.uwaterloo.ca/pidc](http://www.uwaterloo.ca/pidc)



# Cracked

*new light on dementia*

by *Collective Disruption*

A joint creative-research endeavour  
among health researchers and artists

Produced by the  
Partnerships in Dementia Care Alliance

# ***Cracked*** ***new light on dementia***

by **Collective Disruption**

A joint creative-research endeavour  
among health researchers and artists

## **Collective Disruption**

Playwright/Director*	Julia Gray, Ph.D.
Performers*	
<i>Alex, Susie</i>	Susan Applewhaite
<i>Caroline</i>	Lori Nancy Kalamanski
<i>Elaine</i>	Mary Ellen MacLean
<i>Vera</i>	Claire Frances Muir
<i>Clay</i>	Andy Pogson
<i>Tom</i>	Tim Machin
<i>Harold, Jim</i>	Alan K. Sapp
Researchers	Sherry Dupuis, Ph.D. Pia Kontos, Ph.D. Gail Mitchell, Ph.D. Christine Jonas-Simpson, Ph.D.
Stage Manager*	Elizabeth McDermott
Set and Costume Design	Lindsay Anne Black
Music Director	Tim Machin
Asst. Director/Dramaturge	Aynsley Moorhouse
Scenic Artist	Ksenia Ivanova
Wardrobe Assistant	Alyksandra Ackerman
Co-Creators	Mark Prince and David Talbot

\* Engaged under Indie 2.2 through Canadian Actors Equity Association  
The performance runs approximately 55 minutes with no intermission.  
Join the cast and researchers for a question and answer session  
following the performance.

### **Claire Frances Muir – Actor**



Selected credits: *The Merry Wives of Windsor* (Humber River Shakespeare), *Asylum by the Lake* (Manic Prod.), *A Christmas Carol* 2008-2014 (Humber River Shakespeare), *Kissing Swinburne* (LTC), *Bungsu and the Big Snake* (Odyssey Theatre), *Survive the Great Outdoors* (Theatre Beyond Words), *Peter Pan* (The Grand Theatre), *Cinderella* (Port Hope Festival Theatre), *Sylvia* (Tribal Productions and Festival Antigonish), *The Miracle Worker*, *Sylvia* (Theatre North West), *A Guide to Mourning* (Great Canadian Theatre Company), *Serious, Reefer Madness The Musical* (B.A. Productions), *Oliver Twist*, *The Stone Angel* (Alberta Theatre Projects), *Cruel Tears*, *Romeo & Juliet*, *Nicholas Nickleby*, *Mirror Game* (The Globe Theatre), *A Christmas Carol*, *Cyrano de Bergerac* (Theatre Calgary). Upcoming: *August in the Underworld* (Marchlight Films).

### **Andy Pogson – Actor**



Andy is happy to be joining this exciting group and important conversation. Latest credits: *The Cherry Orchard* (Chekhov Collective), *A Christmas Carol* (Theatre Northwest), *Kimberly Akimbo* (Lost and Found Theatre), *Almost, Maine* (Harleydog Productions), and a variety of characters on TV and in film.

### **Mark Prince – Co-Creator**



Mark trained as a member of the Acting Company and Young Company at the Stratford Festival of Canada. He performed with Munich-based TNT Theatre Britain, producing English theatre in countries spanning four continents. He is a founding member of Ruckus Ensemble, a theatre company dedicated to producing *After the Crash*: a play about the experiences of traumatic brain injury. Mark was instrumental in developing the character of Clay for *Cracked*.

### **Alan K. Sapp – Actor**



Alan has lived and worked in Kitchener since moving to Canada with his family in 1992. He received his training, education, and did his early theatre work in the States. Alan was a member of the ensemble of Theatre & Company and a founding member of Lost & Found Theatre, both in Kitchener, where he performed, directed, and ran a training program for students. He just finished directing *The Wizard of Oz* at Rockway Mennonite Collegiate, where he teaches grade 10/11 drama. In 2009, Alan joined the team that created *The Last Fifteen Seconds* presented by MT Space. He originated the role of Moustapha Akkad, the filmmaker/producer killed in a suicide bombing in 2004. Alan has worked with Odyssey Theatre in Ottawa. Some favourite roles: Donald Jackson in *Three in the Back*, *Two in the Head*, Henry II in *The Lion in Winter*, Vanya in *Uncle Vanya*, Pozzo in *Waiting for Godot*, Caliban in *The Tempest* and Godfrey in *Queen Milli of Galt*, a role he originated. Alan is excited to be part of the *Cracked* team!

### **David Talbot – Co-Creator**



David has worked in theatres across the country and on numerous film and television projects. David was one of the original *Cracked* actors and helped develop the characters of Harold and Jim.

### Mary Ellen MacLean – Actor



Mary Ellen works across the country performing, directing, and teaching theatre. She studied with master teacher Tony Montanaro at the renowned Celebration Barn Theatre in Maine, USA. She was a founding member of the Halifax physical theatre ensemble, *Jest in Time*, with whom she toured worldwide with for 20 years, as well as starring in three national CBC television specials with the company. Her one-woman play, *Frankie*, toured across Canada and aired on Bravo TV. Some TV/film credits include: *Hatching, Matching and Dispatching, Wilby Wonderful, Wound-Up, Made in Canada, Liocracy, and Shattered City*. Nova Scotia Merritt Theatre Awards: Twenty Years of Theatre Excellence (*Jest in Time*); Best Production (*Trip-Jest*); nominations for Best New Play (*Frankie*), and Best Actress (*Trip, Frankie*). She recently performed in *Emily's Piano* at YPT and in *Castor and Sylvia* at Summerworks 2015 and is developing a new play entitled *Lower and Slower Please*: the ins and outs of hearing loss.

### Elizabeth McDermott – Stage Manager



Based out of Toronto, stage management is a career change for Elizabeth after many years with the City of Toronto. Theatre credits include: *A City, Divisadero* (Necessary Angel); *Comfort* (Red Snow Collective); *Shakespeare in Love, The Hypochondriac, The Sound of Music, The Taming of the Shrew, Love's Labour's Lost, As You Like It, King of Thieves* (Stratford Festival); *Bella: The Colour of Love* (HGJTC); *Anne of Green Gables The Musical, Canada Rocks!* (Charlottetown Festival); *Othello, A Midsummer Night's Dream, Twelfth Night, All's Well That Ends Well* (St. Lawrence Shakespeare Festival); *The Road to Paradise, Night* (Human Cargo); *The Barber of Seville* (Soulpepper); *Night of the Living Dead Live* (Nictophobia); *Falling: A Wake* (Blythe Festival); *Old Man and The River, Red Kite Project, Binti's Journey, Head à Tête* (Theatre Direct); *Danny, King of the Basement* (Roseneath Theatre); *Yellowman* (Nightwood Theatre/Obsidian Theatre); *Late, Black Medea* (Obsidian Theatre); *Foto* (The Orange Company).

### Gail J. Mitchell, Ph.D. – Researcher



Gail is a Professor of Nursing at York University. Her research interests include arts-based methodologies for creating and translating knowledge. She has worked with persons and families living with memory loss for more than 30 years and believes society can help diminish the suffering of those living with dementia by changing the attitudes, images, and understandings of what it is like to live with dementia. She is also innovating and investigating technologies for e-learning, education, and networking.

### Aynsley Moorhouse, MFA, MSW – Assistant Director / Dramaturge



Aynsley is a Toronto-based artist and a social worker at the Alzheimer Society of Toronto. Aynsley specializes in dementia and the arts, and her particular interest lies in how creative engagement can lead to personal growth, meaningful interactions, and social change. Aynsley has presented her work in university classrooms, hospitals, academic conferences, arts festivals and on CBC Radio, challenging assumptions about aging and dementia.

**Ring the bells that still can ring  
Forget your perfect offering  
There is a crack in everything  
That's how the light gets in.**

– “Anthem” by Leonard Cohen\*

**Cracked: new light on dementia** is an innovative research-based theatre production that raises important questions about the dominant ‘tragic’ ways persons with dementia are understood and treated in our society. Inspired in part by Leonard Cohen’s words in *Anthem*, the play is intended to inspire alternative ways of seeing persons with dementia as vital human beings with agency and possibility. Filled with poignancy, honesty and humour, *Cracked* calls each of us to reflect on the role we play in the lives and experiences of persons living with dementia.

**Cracked** follows persons with dementia and their families on their unique journeys with dementia, from diagnosis through to their new lives in a long-term care home. The families grapple with what the diagnosis means, if and how the diagnosis changes their relationships and how they struggle to be with each other in the present where the persons with dementia call them to be.

**Cracked** is based on research conducted by Drs. Sherry Dupuis, Gail Mitchell, Pia Kontos, and Christine Jonas-Simpson, all of whom are health researchers who specialize in the areas of aging, dementia, and research-based drama. The play was developed collaboratively by a group of artists, the researchers, persons living with dementia and their family members. *Cracked* is grounded in the idea that relationships must be front and centre when providing care for persons with dementia, memory in all of its forms must be valorized, self-expression must be nurtured, and the humanity and full citizenship of persons who are living with dementia must be fully supported. This perspective is in contrast with the dehumanizing care practices that still prevail in many dementia care settings.

---

Cover Art by Gail Mitchell.

*Official Time Signal, ‘1,2,3,4,5,6,7’, Elaine’s Waltz, and The Dementia Song* composed by Tim Machin.

\*Excerpted from *Stranger Music* by Leonard Cohen.

© 1993 Leonard Cohen. Reprinted by permission of McClelland & Stewart.

## Collective Disruption Biographies

---

### **Susan Applewhaite – Actor**



Susan is an actor, musician, and theatre creator. Favourite theatre credits include: *Amadeus*, *Trip to Bountiful*, *A Funny Thing Happened on the Way to the Forum*, *Steeletown*, *Downtown*. Susan is thrilled to be working with Julia and this talented group on this new piece about dementia, which is so challenging and so important.

### **Lindsay Anne Black – Set and Costume Design**



Lindsay Anne has designed sets and costumes for theatre and dance of all sizes, from independent to commercial, both scripted and devised. She has regularly led workshops in high schools as well as at Canadian Stage, Tarragon Theatre, and the Sears Drama Festival. Two of her costumes have been on display at the Design Exchange, and she was the recipient of the 2007 Pauline McGibbon Award, as well as five Dora Award nominations, though never a bride.

### **Sherry L. Dupuis, Ph.D. – Researcher**



Sherry is a Professor in the Department of Recreation and Leisure Studies and the Co-Principal Investigator of the Partnerships in Dementia Care Alliance at the University of Waterloo. Informed by over 30 years of professional and research experience working with persons with dementia and their care partners, Sherry's research program uses participatory approaches as a means of promoting culture change in dementia care and ensuring the voices of persons with dementia and their care partners are actively included in research, education, and practice. She explores how arts-based research and alternative representations of research results can shift images and understandings of dementia and actions in dementia care.

### **Julia Gray, Ph.D. – Playwright and Director**



Julia is a Toronto-based theatre director, playwright, and choreographer with a particular interest in creating new, collaboratively-developed theatre in applied settings. She has collaborated with health researchers on several plays based on health research, including *After the Crash: a play about brain injury* and *Seeing the Forest* about patient safety, co-written with Dr. Gail Mitchell. She has also worked with Canadian Stage Company, Mirvish Productions, Tarragon Theatre, Young People's Theatre, The Charlottetown Festival as well as many independent theatre companies. Julia is a post-doctoral fellow at Holland Bloorview Kids Rehabilitation Hospital.

### **Christine Jonas-Simpson, Ph.D. – Researcher**



Christine is an Associate Professor of Nursing at York University, the Director/Chair of the York-UHN Academy and the Director of the Dotsa Bitove Wellness Academy for persons living with dementia. She has conducted arts-based research since 1997 through music, drama, paintings, and documentary film. Her program of research focuses on how humans live, transform, and grow with loss and grief in their lives. Christine has partnered in care and research with persons and families living with dementia for 30 years. She is thrilled to be part of the movement that is shifting the discourse and culture of dementia care from tragedy and isolation to possibility and relationships through the use of narrative and arts-based methods.

### **Lori Nancy Kalamanski – Actor**



Lori Nancy is grateful to have been part of the *Cracked* family since its inception five years ago. It has been a powerful and touching experience enlightening her relationships with family and friends living with dementia. She is humbled to use her skills as an actor, singer, and theatre creator to explore this important topic with audiences. Recently she originated the role of Dr. Libby Prowse in *Hogtown: The Immersive Experience* and toured Europe with bluemouth inc.'s *Dance Marathon*. Upcoming she appears in television episodes of *Killjoys* and *The Girlfriend Experience*, and eagerly awaits the release of *Sing Along Tim & The Pacifiers'* next album of family-friendly folk tunes with fellow band and cast member Tim Machin.

### **Pia Kontos, Ph.D. – Researcher**



Pia is a Senior Scientist at Toronto Rehabilitation Institute-University Health Network and Associate Professor at the Dalla Lana School of Public Health, University of Toronto. Central to her program of research is the transformation of the culture of dementia care so it is more humanistic and quality enhancing for individuals living with dementia, their families, and health care practitioners. She draws significantly on the arts for their emotive and expressive nature, specifically music, dance, and improvisational drama to enrich the lives of individuals living with dementia. Research-based drama and film are also drawn upon as novel approaches to affecting both personal and social change.

### **Tim Machin – Actor, Musical Director and Composer**



Tim is an actor/musician/writer. He has worked in the UK, Europe and Canada. Highlights from the UK and Europe include weekly rep in Frinton and Sheringham, a UK tour with the Reduced Shakespeare Company, and European tours with TNT Theatre. In Canada he has worked at Chemainus Festival Theatre and Caravan Farm Theatre in BC, Catalyst Theatre in Alberta and on tour across Canada. In Ontario he spent three seasons with Driftwood Theatre and bits and pieces elsewhere including work for Theatre Direct. With his band, Sing Along Tim and the Pacifiers he has played at various folk festivals and fairs across Ontario including the Mariposa Folk Festival and the Montreal Folk Festival.